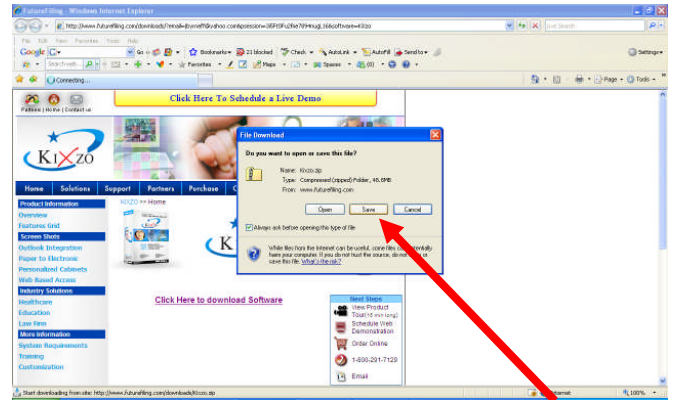
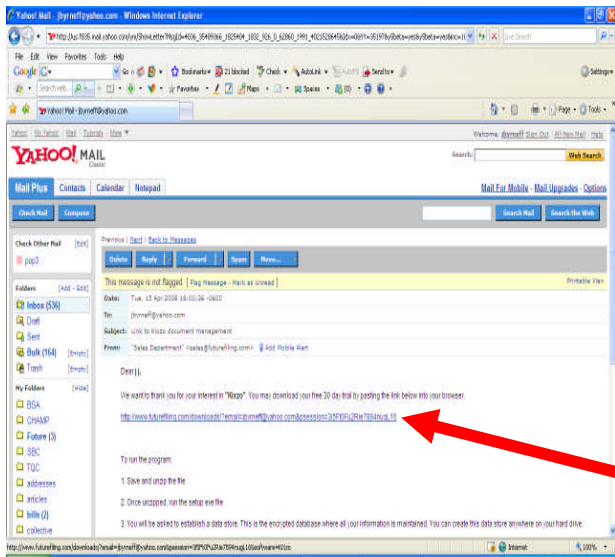


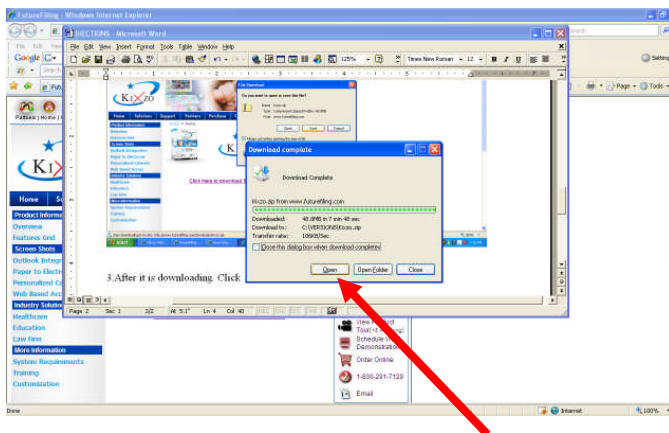
SIMPLE STEPS TO FOLLOW FOR INSTALLING KIXZO. IF YOU HAVE ANY QUESTIONS WE ARE AVAILABLE AT 1-800-291-7129

1. Click on the link that was sent in the email, you will be asked to either OPEN or SAVE the file. Press SAVE.

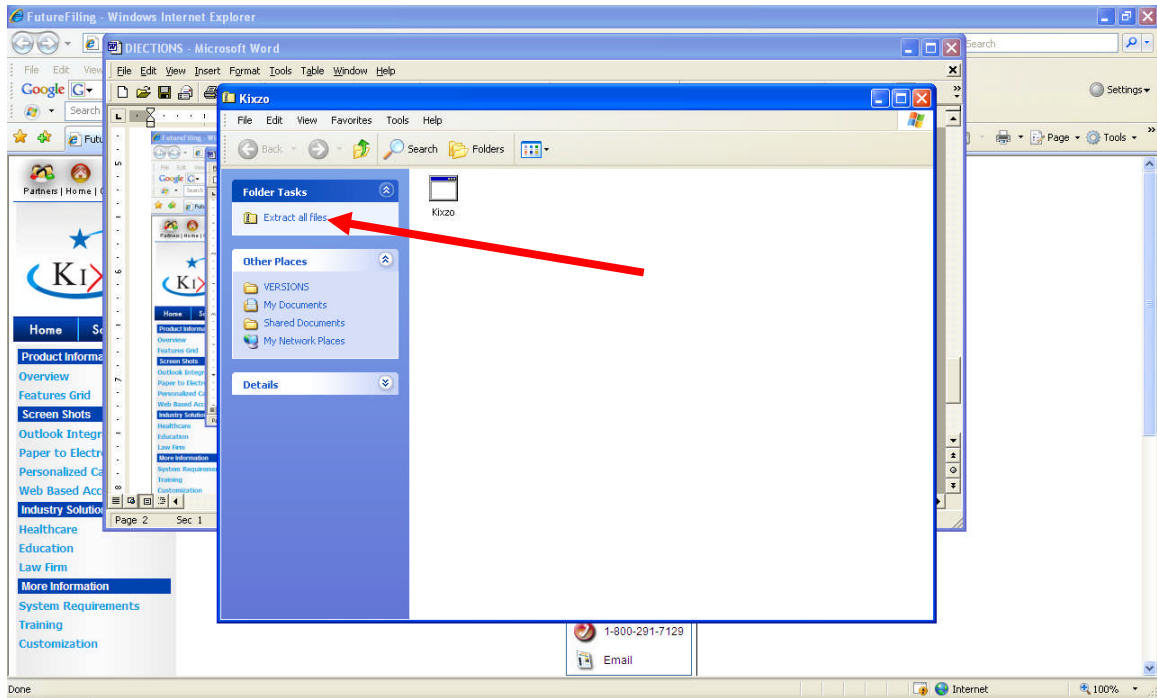


2. Save the zip file to a location on your hard drive, such as under MY DOCUMENTS

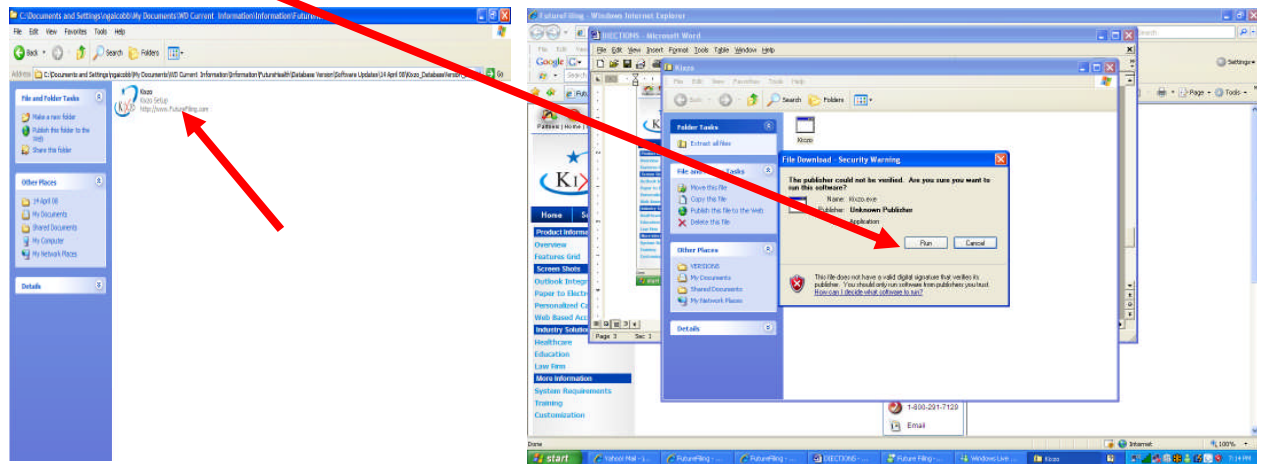
3. After the file downloads, click on the "OPEN" button.



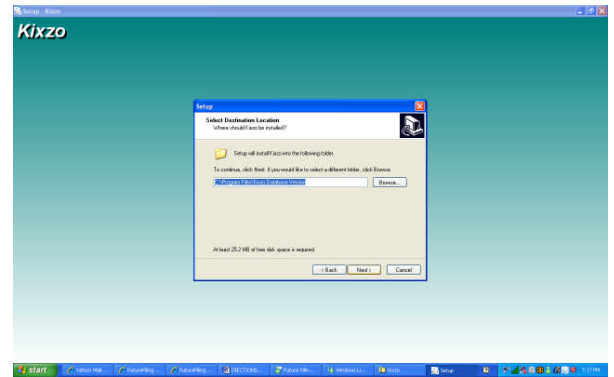
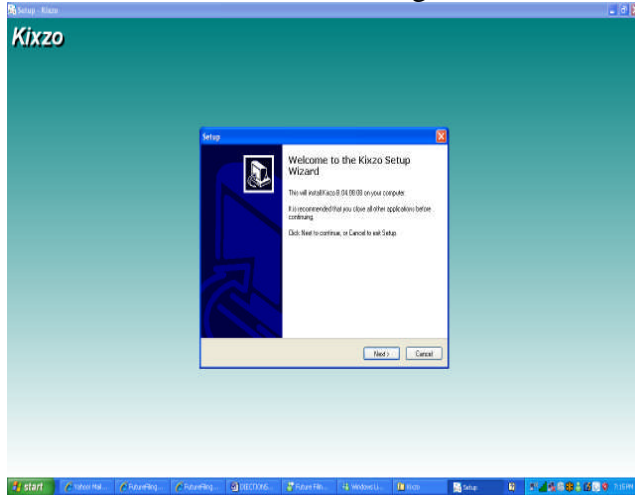
4. Once the document is open, Click the “Extract All Files” that appears on the left hand side.



5. Double click on the KIXZO button. This brings up a screen with two buttons. Press the RUN button. This begins the installation process.

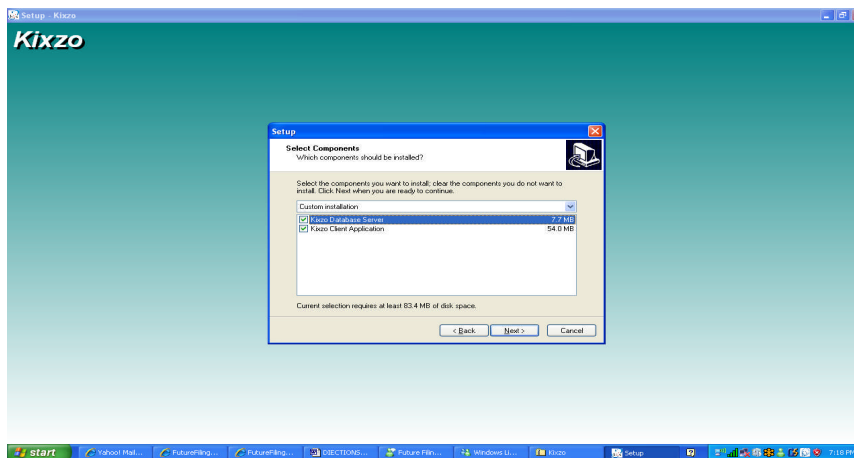


6. Select Next for the following two screens.

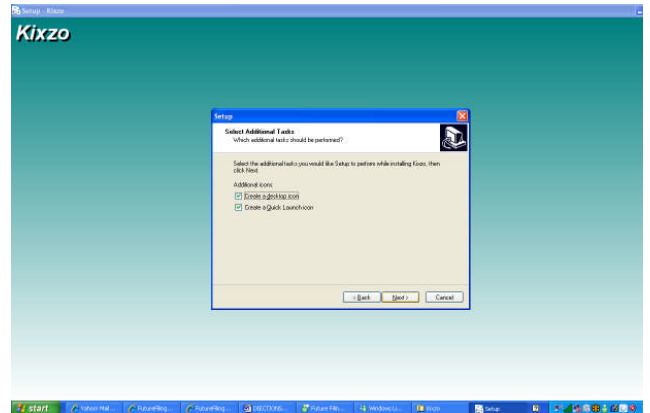
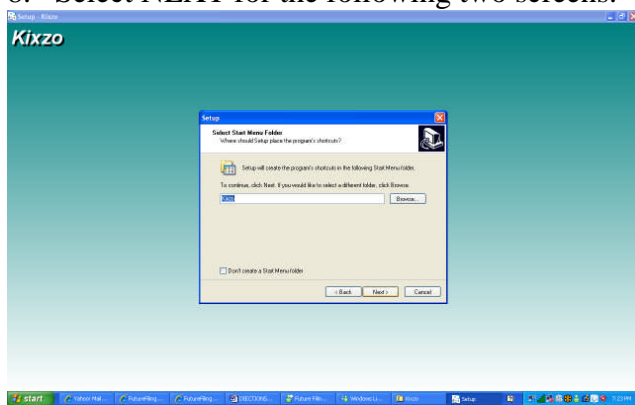


7. KIXZO has two choices. KIXZO DATABASE SERVER and KIXZO CLIENT APPLICATION. If this is being installed for the very first time and you want your computer to be used as the “server” (meaning it will contain the KIXZO database) then you must select both KIXZO DATABASE SERVER and KIXZO CLIENT APPLICATION.

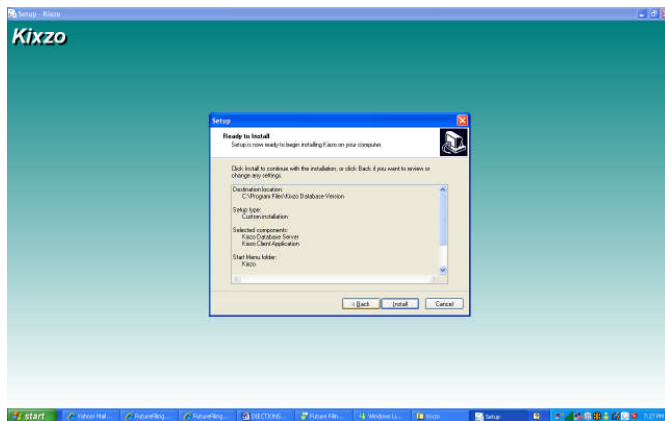
NOTE: After the Database has been installed and you are installing KIXZO on other machines that are networked to that “Server” then you ONLY select KIXZO CLIENT APPLICATION. This means the “Client” machines do NOT contain the Database but will share the Database from the server machine. As a result you are only installing the client and NOT the Database.



8. Select NEXT for the following two screens.

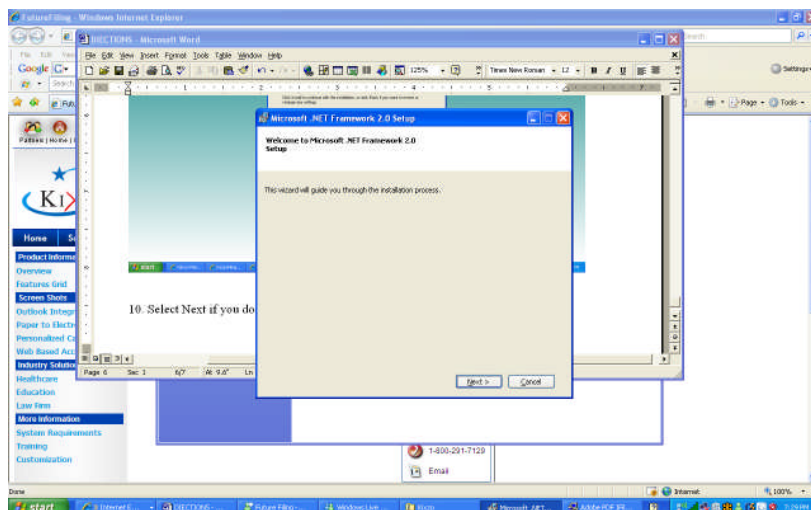


9. Select Install

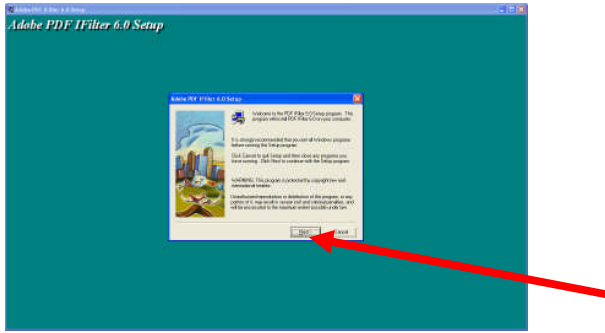


10. Select Next if you do not have .net 2.0 loaded.

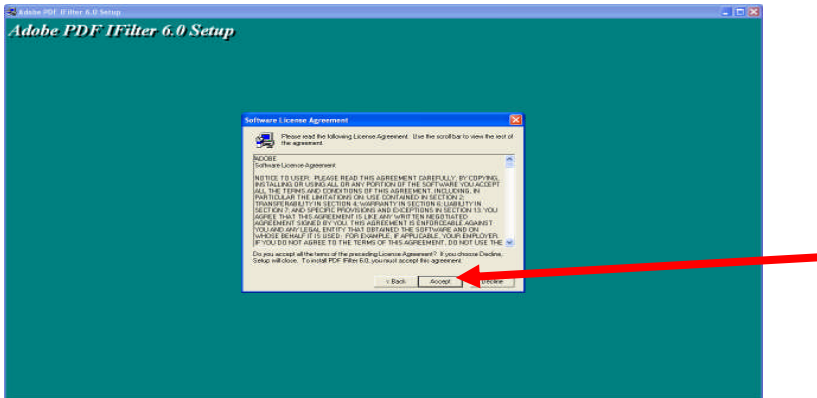
NOTE: KIXZO requires .NET 2.0 to operate. If your computer does NOT have .NET 2.0 this installation will install .NET 2.0. If your system DOES have .Net 2.0 already installed then the installation of the .NET 2.0 will fail, but DO NOT WORRY, KIXZO will continue to install.



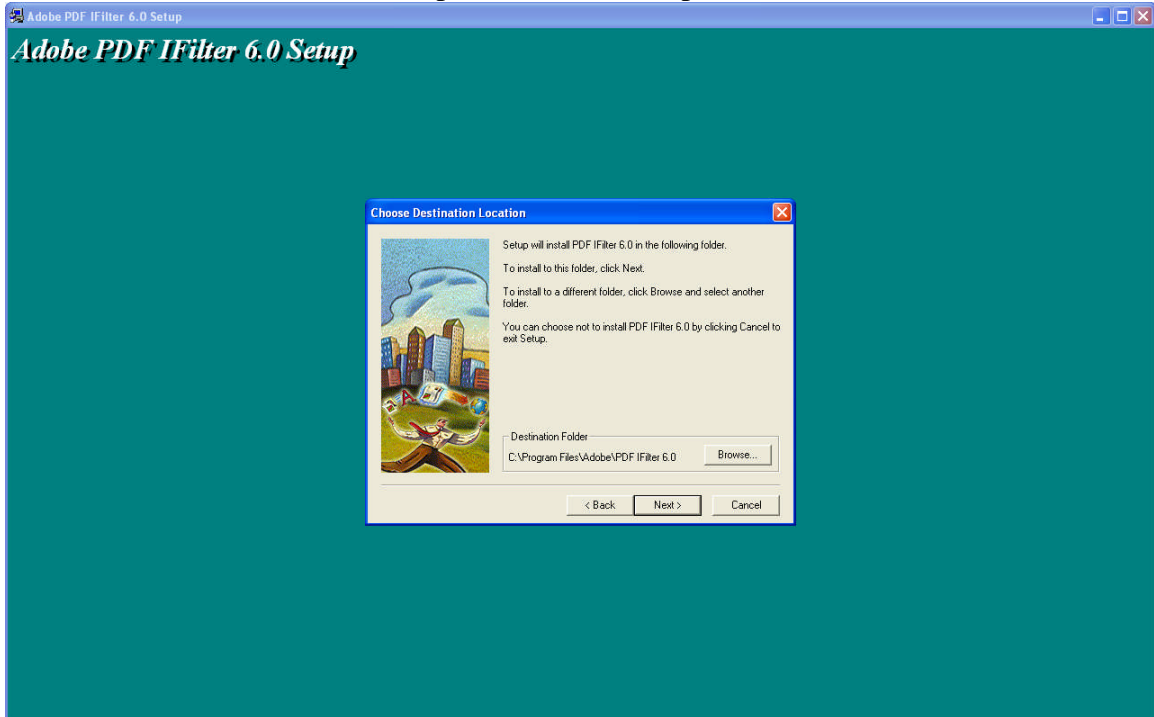
11 . Select Next



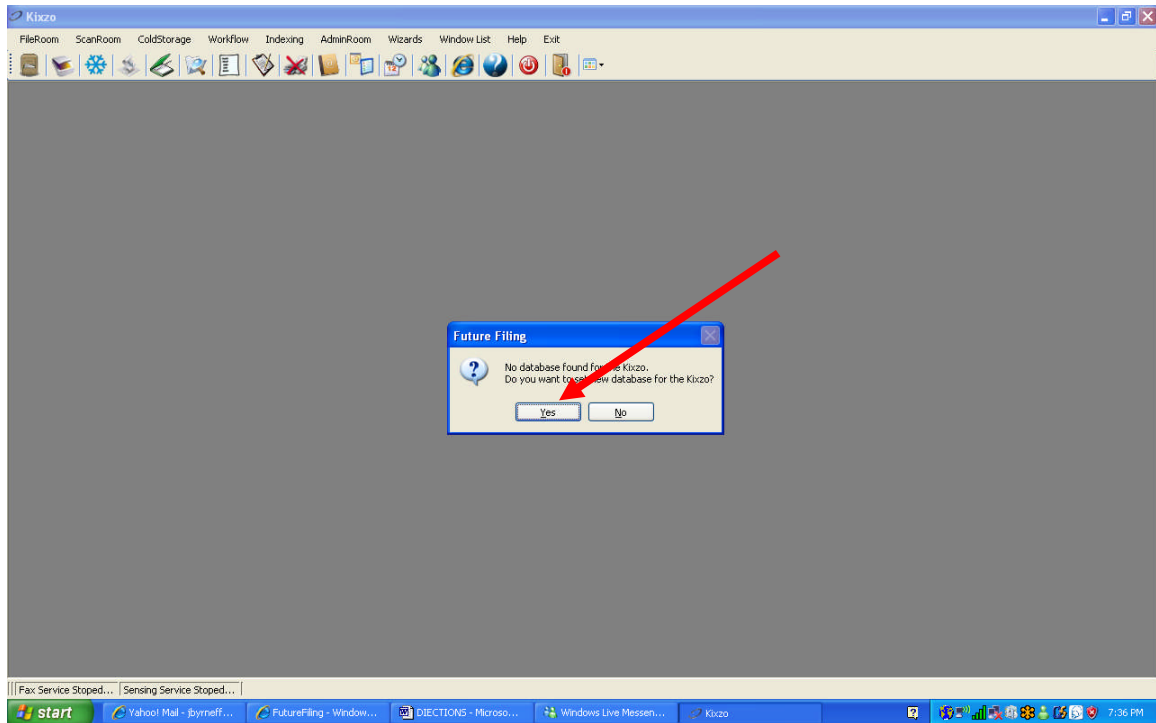
12. Select Accept



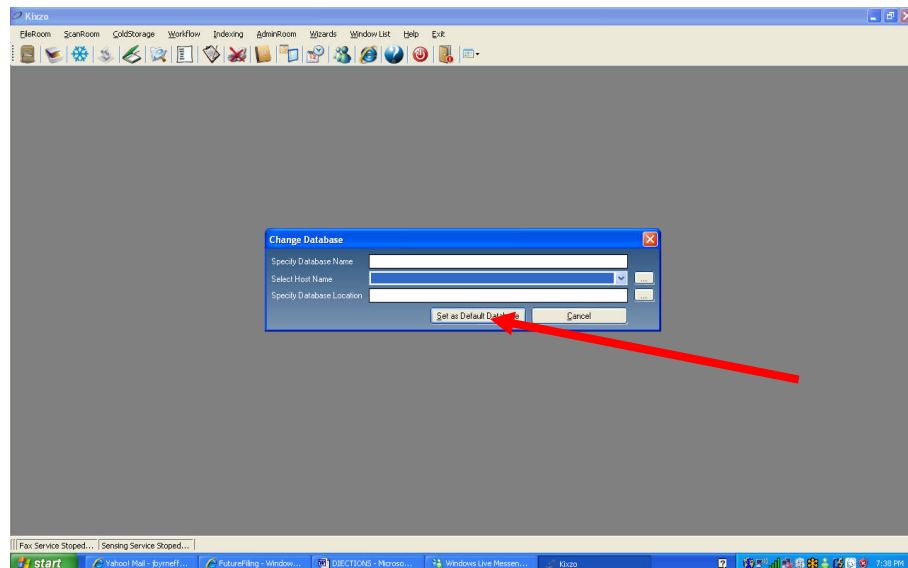
13. Select Next and let the install proceed. This completes the Installation of KIXZO.



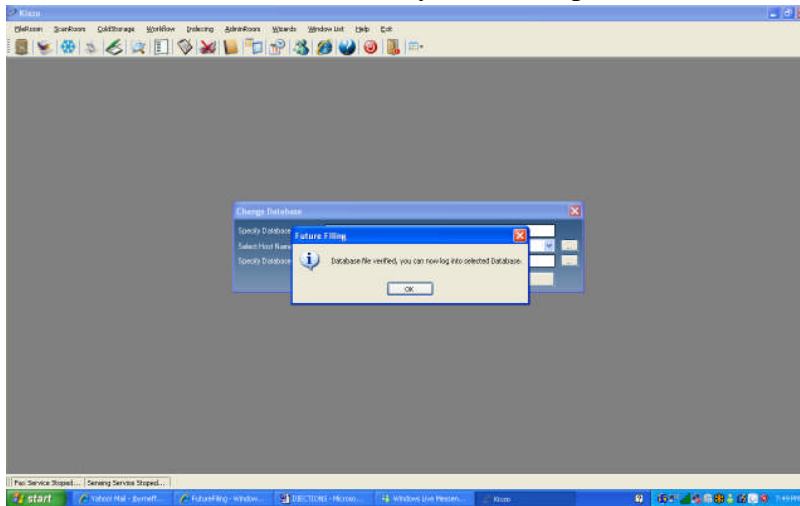
- To Start KIXZO. Go to the START button on your computer, Go To ALL PROGRAMS and press KIXZO.
- This brings up the popup box indicating that no database is found. This is Normal. We will simply direct KIXZO to where the database is located. Press the YES button.



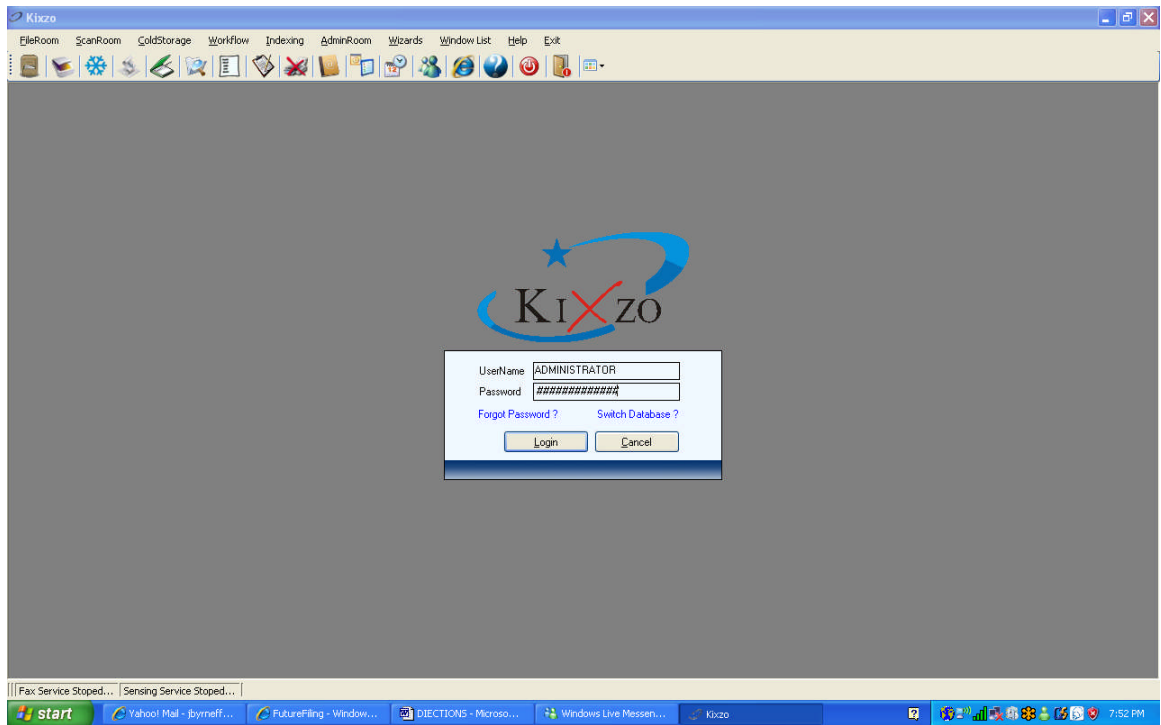
- Select the bottom button. This brings up a browser that allows you to select the location of the KIXZODATABASE that was installed earlier. By Default the Database is installed at: C:>KIXZOFDB. Go to this location and select the KIXZODATABASE file.
- Then press the SELECT AS DEFAULT DATABASE button. You will then get a message saying the database is verified.



18. Select OK. KIXZO will close so you will reopen it.



19. After the database is installed, the default USERNAME and PASSWORD is the word ADMINISTATOR. Make sure that ADMINISTATOR is in ALL CAPS.



Welcome to KIXZO

The screenshot displays the Kixzo Dashboard web application. At the top, a blue header bar contains the title "Kixzo [Dashboard]" and a menu with items: FileRoom, ScanRoom, ColdStorage, Workflow, Indexing, AdminRoom, Wizards, Window List, Help, and Exit. Below the header is a toolbar with various icons. The main content area is divided into several sections:

- Information:** Contains status indicators for "Fax Service" (with a red 'X' icon) and "Auto Sensing" (with a red 'X' icon). It also shows "Last Login Time:" and "Current Login Time: 4/15/2008 7:53:02 PM".
- Detail List:** A grid of icons representing different system components: Workflow Task, Inbox, Alerts, MailBox, Assigned Flights, Templates, OffLine Messages, Scanned Documents, Deleted Items, and Recent Documents.
- Users:** A section titled "Users" showing "Online Users (1)".

At the bottom, a status bar displays system information: "User : ADMINISTRATOR | You are using : Dashboard | Fax Service Stopped... | Sensing Service Stopped... | FUTURELAPTOP;C:\Kixzo\FDB\KIXZO\DATABASE.FDB". The Windows taskbar at the very bottom shows the Start button, several open applications (Yahoo! Mail, FutureFiling, DJECTIONS, Windows Live Messenger), and the system tray with the time "7:53 PM".